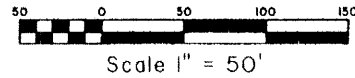


BRIGER PARCELS B, E AND F

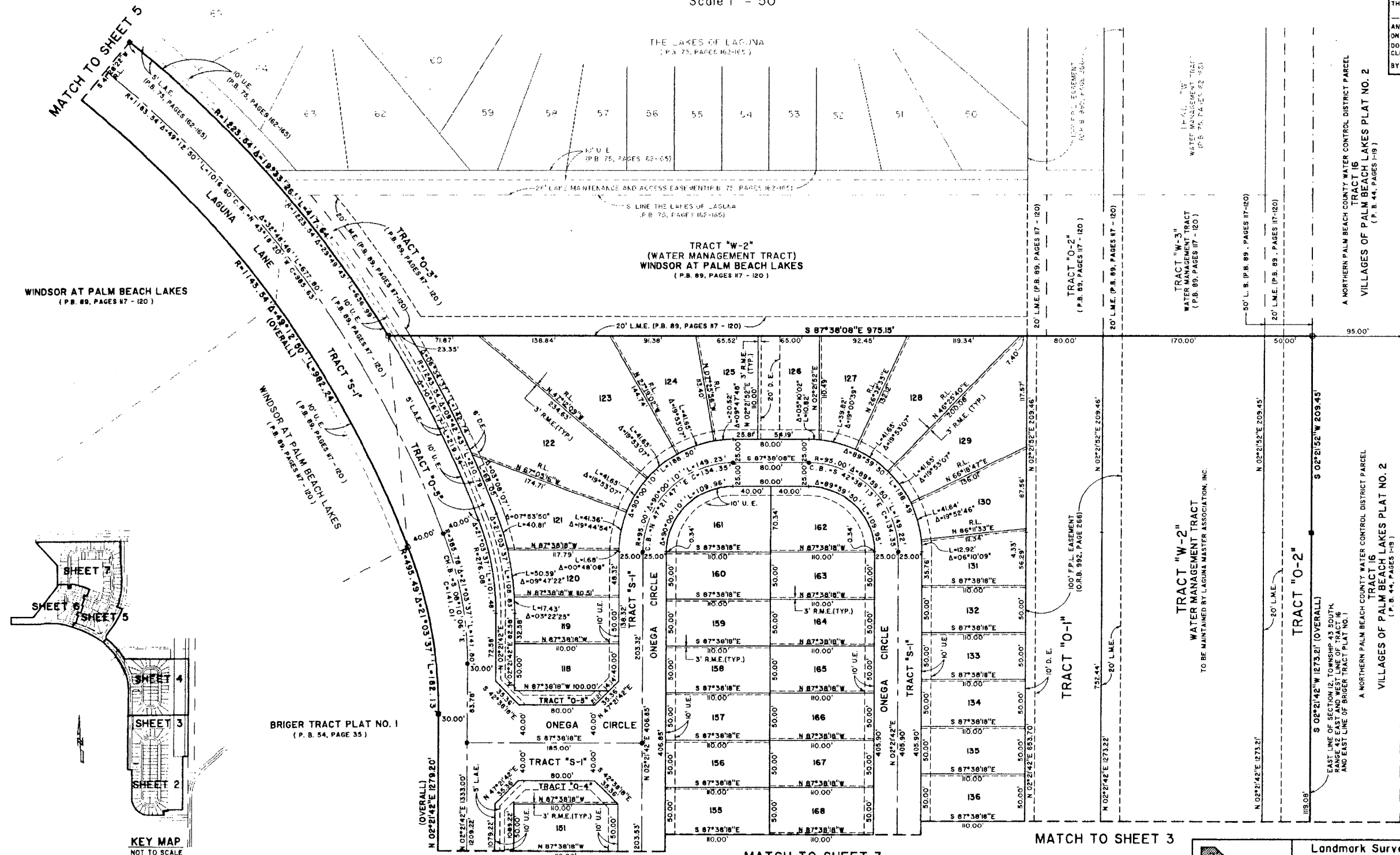
BEING A REPLAT OF A PORTION OF BRIGER TRACT PLAT NO. 1, AS RECORDED IN PLAT BOOK 54, PAGE 35,
AND A REPLAT OF A PORTION OF TRACT "F", WINDSOR AT PALM BEACH LAKES, AS RECORDED IN PLAT BOOK 89,
PAGES 117 THROUGH 120, INCLUSIVE, PUBLIC RECORDS OF PALM BEACH COUNTY, FLORIDA, LYING IN SECTION 12,
TOWNSHIP 43 SOUTH, RANGE 42 EAST, CITY OF WEST PALM BEACH, PALM BEACH COUNTY, FLORIDA.



141

STATE OF FLORIDA SS
COUNTY OF PALM BEACH
THIS PLAT WAS FILED FOR RECORD AT _____
M., THIS _____ DAY OF _____ 2001
AND DULY RECORDED IN PLAT BOOK NO. _____
ON PAGE _____
DOROTHY H. WILKEN,
CLERK OF THE CIRCUIT COURT
BY _____ D.C.

SHEET 4 OF 7



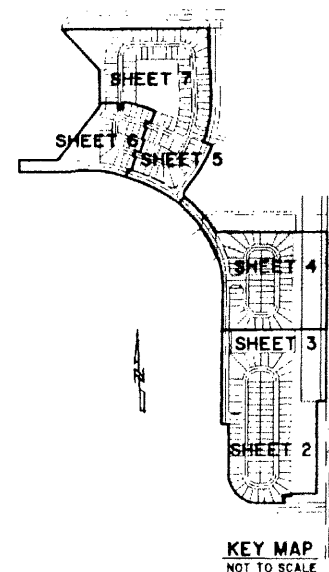
WINDSOR AT PALM BEACH LAKES
(P.B. 89, PAGES 117 - 120)

TRACT "W-2"
(WATER MANAGEMENT TRACT)
WINDSOR AT PALM BEACH LAKES
(P.B. 89, PAGES 117 - 120)

TRACT "O-2"
(P.B. 89, PAGES 117 - 120)

TRACT "W-3"
(WATER MANAGEMENT TRACT)
(P.B. 89, PAGES 117 - 120)

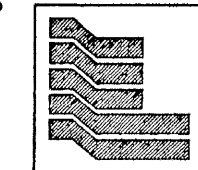
A NORTHERN PALM BEACH COUNTY WATER CONTROL DISTRICT PARCEL
TRACT 16
VILLAGES OF PALM BEACH LAKES PLAT NO. 2
(P.B. 44, PAGES 1-19)



BRIGER TRACT PLAT NO. 1
(P.B. 54, PAGE 35)

TRACT "W-2"
(WATER MANAGEMENT TRACT)
TO BE MAINTAINED BY LAGUNA MASTER ASSOCIATION, INC.

TRACT "O-2"
EAST LINE OF SECTION 12, TOWNSHIP 43 SOUTH,
RANGE 42 EAST AND WEST LINE OF TRACT 16
AND EAST LINE OF BRIGER TRACT PLAT NO. 1
A NORTHERN PALM BEACH COUNTY WATER CONTROL DISTRICT PARCEL
TRACT 16
VILLAGES OF PALM BEACH LAKES PLAT NO. 2
(P.B. 44, PAGES 1-19)



Landmark Surveying & Mapping Inc.
1850 Forest Hill Boulevard
Ph. (561) 433-5405 Suite 100 W.P.B. Florida
LB # 4396

BRIGER PARCELS B, E, AND F